



# ICS - CARGO

## New processes for 1 January 2011

Roma, 20 September 2010

Marco Marsili

Ufficio Integrazione Applicativa



© Copyright 2008-2010  
Direzione Centrale Tecnologie per l'Innovazione

---

# What changes in the process of entry ICS - Phase 1

## The Entry Summary Declaration (ENS)

According to the Reg. (EC) 648/2005 (art. 36 a) goods brought into the customs territory of the Community shall be covered by a summary declaration.

The ENS shall be lodged by (art. 36 b, par. 3 e 4):

1. The person who brings the goods, or who assumes responsibility for the carriage of the goods into the customs territory;
2. The person in whose name the person referred to in the first point acts;
3. Any person who is able to present the goods in question or to have them presented to the competent customs authority;
4. A representative of one of the above persons.

**In most cases it will be the carrier (shipping company or air carrier) or his representative, who will transmit the ENS**

## The deadlines for the lodgement of the ENS -1

In the case of **maritime traffic** the entry summary declaration shall be lodged at the customs office of entry by the following deadlines (Reg. (EC) 1875/2006 art. 184 a) :

- For containerized cargo: **at least 24 hours** before loading at the port of departure (except the following cases);
- For bulk/break bulk cargo: **at least 4** hours before arrival at the first port in the customs territory of the Community;
- For movement between Greenland, the Faeroe Islands, Ceuta, Melilla, Norway, Iceland or ports on the Baltic Sea, the North Sea, the Black Sea or the Mediterranean, all ports of Morocco: **at least 2 hours** before arrival at the first port in the customs territory of the Community.

## The deadlines for the lodgement of the ENS - 2

In the case of **air traffic** the entry summary declaration shall be lodged at the customs office of entry by the following deadlines:

- For **short haul flights, at least by the time of the actual take off** of the aircraft;
- For **long haul flights, at least four hours** prior to arrival at the first airport in the customs territory of the Community.

## The information foressen

Annex 30 a of the Reg. (EC) 1875/06, modified by the Reg. (EC) 312/09, shows in general the data elements that must be included in the ENS.

Special categories (couriers, AEO, postal consignments, etc..) can transmit a reduced data set.

The message details for the ENS are published in the "e-customs.it -> ICS – AIS" section of the Italian Customs web site.

Voce	Dichiarazione sommaria di uscita (cfr. nota 3.1)	Dichiarazione sommaria di entrata (cfr. nota 2.1)
Numero di articoli	Y	Y
Numero di riferimento unico delle spedizioni	X/Y	X/Y
Numero del documento di trasporto	X/Y	X/Y
Spedizioniere	X/Y	X/Y
Persona che presenta la dichiarazione sommaria	Y	Y
Destinatario	X/Y	X/Y
Trasportatore		Z
Parte destinataria della notifica		X/Y
Identità e nazionalità del mezzo di trasporto attivo che varca la frontiera		Z
Numero di riferimento del trasporto		Z
Codice del primo luogo di arrivo		Z
Data e ora di arrivo nel primo luogo di arrivo sul territorio doganale		Z
Codici del o dei paesi di transito	Y	Y
Ufficio doganale all'uscita	Y	
Localizzazione delle merci	Y	
Luogo di carico		X/Y
Codice del luogo di scarico		X/Y
Designazione delle merci	X	X
Tipo di colli (codice)	X	X
Numero di colli	X	X
Marchi di spedizione	X/Y	X/Y
Numero di identificazione del materiale, se containerizzato	X/Y	X/Y
Numero di articolo	X	X
Codice delle merci	X	X
Massa lorda (kg)	X/Y	X/Y
Codice delle merci pericolose (ONU)	X	X
Numero del suggello	X/Y	X/Y
Codice del metodo di pagamento delle spese di trasporto	X/Y	X/Y
Data della dichiarazione	Y	Y
Firma/Autenticazione	Y	Y
Indicatore di circostanze particolari	Y	Y



## Lodgement of the Entry Summary Declaration (ENS)

- The ENS is related to each consignment loaded into the mean of transport (identified by the IMO or the flight number).
- The common risk analysis is carried out on the data elements of the ENS (it is based on 27 risk profiles, that are the same in the 27 Member States)
- In relation to the degree of risk, for each good item of the ENS are foreseen the following possibilities:
  1. **“do not load”**, only for for containerised cargo referred at art. 184 a, par. 1, lett. a (Reg. (EC) 1875/2006),
  2. Control at the **first point** of entry,
  3. Control at the **actual point** of unloading,
  4. **No control.**

## Notification of Arrival (NA)

According to the Reg. (EC) n. 312/2009 (art. 184g):  
the operator of the active means of transport entering the customs territory of the Community or his representative shall notify the customs authorities of the first customs office of entry of the arrival of the means of transport.

This notification of arrival shall contain the particulars necessary for the identification of the entry summary declarations lodged in respect of all goods carried on that means of transport. **Wherever possible, available methods of notification of arrival shall be used.**

**Usage of the Arrival Manifest (Manifesto delle Merci in Arrivo, MMA)**

**The validation of the MMA replaces the NA**



---

# The technical details of ICS Project

## The Entry Summary Declaration - ENS

- The person responsible for the lodgement of the ENS, for the transport means that have an Italian Customs Office as First Customs Office in the Community, must send an electronic message (idoc ENS) to the Italian Customs System (Electronic Customs Service -Servizio Telematico Doganale, STD) prepared in accordance with the provisions of the user manuals (see Section 2.1, pag. 7-8, of the "appendice per le dichiarazioni doganali - tracciati unificati del manuale utente").
- The message must be sent using the file type 'T', already used for customs declarations without electronic signature (eg. import declaration - message "B1", etc.).

## Response Message - ENS

- In response to the ENS, the Electronic Customs Service (STD) sends a return message (**icntrl**) in order to confirm the reception of the declaration, containing the date and time processing and the number of processed messages. After processing the declaration, the system sends a reply message (**irisp**) containing its MRN (Movement Reference Number).
- The reply message will also be available to the carrier (or his representative) if the following conditions are satisfied:
  - 1) He is declared in the ENS and he has a valid EORI;
  - 2) He is a different person than who sent the ENS;
  - 3) He is an authorized user of the STD.
- A special message will be sent to the person who has lodged the ENS and to the carrier (or his representative) when the goods must not be loaded on a ship ('DO NOT LOAD' message).

## ENS Amendment

- The electronic message (RENS) regarding a request for amendment has the same layout of the ENS and refers to this through the field "Reference number", in which is inserted the MRN of the ENS that must be amended. The request for amendment does not generate a new MRN.
- The amendments of the ENS may be related to the modification, creation and deletion of data within the declaration. Requests must be sent to the same office of first entry to which had been sent the ENS, which will carry out validation checks. It's not possible to amend an ENS if the decision to control has been communicated or if the means of transport is arrived at the first office of entry into the Community.

## DIV – Diversion of the mean of transport

- Diversion occurs when the means of transport arrives in a Member State other than the office of first entry or the subsequent entry declared in the ENS. The carrier (or his representative) that has an EORI send to the declared first customs office the request for diversion "DIV". After the diversion is not possible to amend the ENS.
- The request for diversion must include:
  - The actual office of first entry and the previously declared;
  - All the MRNs of the means of transport;
  - Or in case of maritime / air transport the elements that allow a unique identification of means of transport ("Entry Key"), in order to identify the ENS of competence.

Entry Key = transport mode + ID (IMO / flight number) + scheduled date of arrival.

## The panel of monitoring of the summary declarations for safety purposes

The panel of monitoring of the summary declarations, in AIDA, allows to customs officials to manage both entry and exit summary declarations, and therefore allows, through appropriate filters, to choose if the official wants to monitor the ENS or EXS.

Each item in the panel corresponds to a consignment of the summary declaration identified by MRN and ITEM NUMBER, for which at least one Common Risk Criteria (CRC) is positive.

The customs official can confirm the risk identified by the system (type O, A, B, C, N, Z).



## The Arrival Notification (AN)

- The operator of the active means of transport entering in the customs territory, or his representative, shall notify the customs authorities of the first customs office of entry for the arrival of mean of transport.
- In the section “general data” of the MMA (version 4.1, available in the training environment from the 1<sup>st</sup> July) it will be mandatory to include the “entry key” of the mean of transport (IMO / flight number), in order to identify the ENS associated with it.

**Usage of the Manifest of Incoming Goods (Manifesto delle Merci in Arrivo, MMA)**  
**The validation of the MMA replaces the AN**

## The Business Process Modeling (BPM)

- In order to proceed organically to the amendments that must be applied to customs processes, from now till the implementation of the Modernised Customs Code and beyond, Working Groups have been established at Community level for the definition of BPM import and export.
- During this activity, it has been strongly represented to the Commission that, when possible, the different steps of the customs process can be completed through integrated solutions that simplify the process and reduce burdens for traders.

## Phases in the BPM import



## The Italian solution: integration and simplification

IN ITALY from 1<sup>st</sup> January 2011, the MMA, completed with the "entry-key" and references the entry summary declarations (MRN - ITEM NUMBER) for the goods that must be unloaded, will perform the following functions / processes:

1. Arrival Notification (AN)
2. Presentation Notification (PN)
3. Summary Declaration for Temporary Storage (SDTS)

..... without further formalities for traders.

## Validation of the Manifest of Arriving Goods (MMA)

- The validation of the manifest will be made by sending the closure record of the MMA. Pending of the introduction of electronic signature for MMA messages, it must be presented to the customs a signed copy of the manifest (just the front page).
- The number of Temporary Storage Consignment (so called A3), that has been generated and validated after the closure of the MMA, will be:
  - immediately declarable (box 44 of the SAD): if the A3 is associated to the good item of an ENS that does not require a security control or require a security control (in the latter case the goods will be released after the completion of the security control).
  - Not declarable: the A3 is associated to the good item of an ENS whose risk assessment is still ongoing.

## Update of the status of the numbers of Temporary Storage Consignment

- **The A3 changes status following:**
  - The insertion of the control result (when the customs official enter in the system the control result);
  - The risk assessment made by the customs official.
- **The responsible of the MMA will verify the changes of the status of the A3 through the monitoring of STD message responses.**

## Amendment and integration of the MMA - 1

**Amendment and integration** of the MMA are available to the traders by electronic messages.

**Before** sending the record Z of closure of the MMA, which validates the manifest – it means that the mean of transport is still not arrived, the above operations are carried out automatically (without any intervention by the customs official).

**After** sending the record Z of closure of the MMA, which validates the MMA – it means that the mean of transport is arrived, the amendment and integration will be possible in the way currently available: the amendment and integration of one or more items of MMA requires an activity of the customs official of the “Manifest Office”. The customs office may require the supporting documentation.



## Amendment and integration of the MMA - 2

The **integration** of new records in the MMA requires the intervention of the customs official, which must approve the integration under the new rules (Safety & Security controls, etc.).

**Cancellation** of records from the MMA must be requested to the customs office.

## Panel of monitoring “Safety & Security”

The panel of monitoring “Safety & Security”, in AIDA, allows customs officials to visualize, at the time of validation of the MMA, the "risky" item of an ENS identified by "MRN - ITEM NUMBER“, and the corresponding A3.

At each row of the panel corresponds an item of the ENS (hence the insertion of the control result modify the status of the A3).

## Avoid duplicate controls

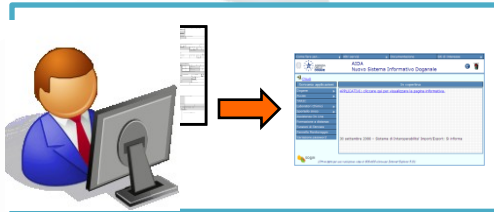
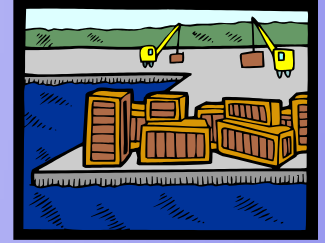
When is required a security control of a MRN – ITEM of an ENS associated to an A3 (Temporary Storage Consignment), the Economic Operator can transmit the customs declaration immediately after the validation of the MMA and prior to the execution of safety and security control (A3 in box 44). In this way, any control for customs purposes can be conducted simultaneously with that provided for safety and security purposes.

## Subsequent Customs Office

When an Italian port / airport is an office of subsequent entry in the community, it will receive through the CCN/CSI from the office of first entry the information concerning the consignments to be checked for safety and security.

Through the MMA and as it has been illustrated in the case of office of first entry into the EU, the references of unloading goods (MRN – ITEM NUMBER) to be checked will be inserted in the panel of monitoring Safety & Security.

# ICS in Italy

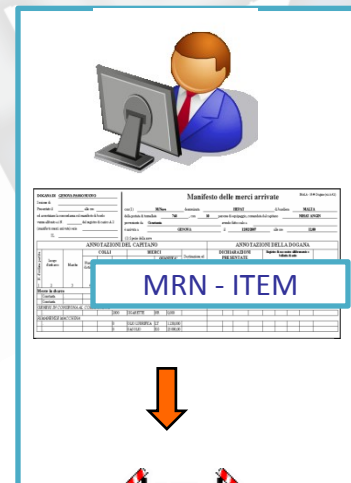


**Person who lodges the summary declaration** (art. 36b, par. 3 e 4 of Reg. (CE) 648/2005)  
**Lodges the Entry Summary Declaration (ENS)**

➔ **AIDA**  
**Generates the MRN**



➔ **Responsible of the MMA**  
**Sends the MMA with a reference in each row to the MRN – ITEM of the ENS**



➔ **Responsible of the MMA**  
**Validates the MMA.**  
 A3 validated will be in one of the following states:

- A3 immediately declarable
- A3 not declarable

The responsible of the MMA shall monitor the updates of the records of the STD in order to monitor the variation of the status of the A3

# Contacts

---

By e-mail to the following address:

[dogane.ecustoms@agenziadogane.it](mailto:dogane.ecustoms@agenziadogane.it)

specifying in the object:

**“Project ICS”** for ENS, DIV, RENS, ecc.

**“Project ECS”** for EXS, ecc.

**“Project CARGO”** for MMA and MMP

**“Safety&Security”** for risk analysis

**“Telematic service”** for STD and formal errors in the test



# Support by e-mail

---

## Usage statistics

In relation to new obligations related to the safety and security amendment, until today we have received to the mail box

[dogane.ecustoms@agenziadogane.it](mailto:dogane.ecustoms@agenziadogane.it) 103 questions:

- 62 from foreign operators;
- 41 from Italian operators.

# Support by e-mail

---

## FAQ - 1

**Q:** How to send the **Arrival Notification**?

**A:** The data elements of the Arrival Notification **are included in the MMA**, and therefore for customs purposes should not be sent any new message.

**Q:** Which kind of document must be indicated in the **"Istanza di adesione"** to access the STD in order to be able to send messages ICS (ENS, etc.)?

**A:** For those who do not already have this type of enabling, **it must be indicated "customs declarations"**.

**Q:** Which is the **type of file** to send messages within ICS?

**A:** The **type "T"** already in use for other customs declarations (B1, etc).

# Support by e-mail

---

## FAQ - 2

**Q:** What are the **benefits for AEO and special categories**?

**A:** Community specifications foresee that if it is declared a status of these conditions **than apply specific rules and conditions specified in the compilation rules of the ENS.**

**Q:** How will be treated **non-Italian ENS**?

**A:** The non - Italian ENS can be indicated in the MMA and, when necessary, AIDA will send an information request to the issuing country.

**Q:** What is the **LRN (Local Reference Number)**?

**A:** It is the reference number, unique on-year basis, assigned by the Economic Operator to the ENS, and may coincide with the "numero di pratica" field in the header of the message.

# Information available

---

Reference information to be used as a starting point for the testing activities are available at:

[www.agenziadogane.it/wps/wcm/connect/ed/Servizi/AIDA/](http://www.agenziadogane.it/wps/wcm/connect/ed/Servizi/AIDA/)

(news for AIDA and CARGO)

[www.agenziadogane.it/wps/wcm/connect/ed/Servizi/ecustoms\\_it/ICS+AIS/](http://www.agenziadogane.it/wps/wcm/connect/ed/Servizi/ecustoms_it/ICS+AIS/)

(transmission mode, operational processes - scenarios of interchange, ENS, RENS, DIV and rules on compiling)

[www.agenziadogane.it/wps/wcm/connect/ed/Servizi/ecustoms\\_it/AES/](http://www.agenziadogane.it/wps/wcm/connect/ed/Servizi/ecustoms_it/AES/)

(ECS Project, EXS and REXS message)

[www.agenziadogane.it/Servizio+Telematico+Doganale E.D.I./](http://www.agenziadogane.it/Servizio+Telematico+Doganale E.D.I./)

(guide for activation and usage of EDI, on-line assistance, e-learning for economic operators)



# ICS - CARGO

## New processes for 1 January 2011

Roma, 20 September 2010

Marco Marsili

Ufficio Integrazione Applicativa



© Copyright 2008-2010  
Direzione Centrale Tecnologie per l'Innovazione